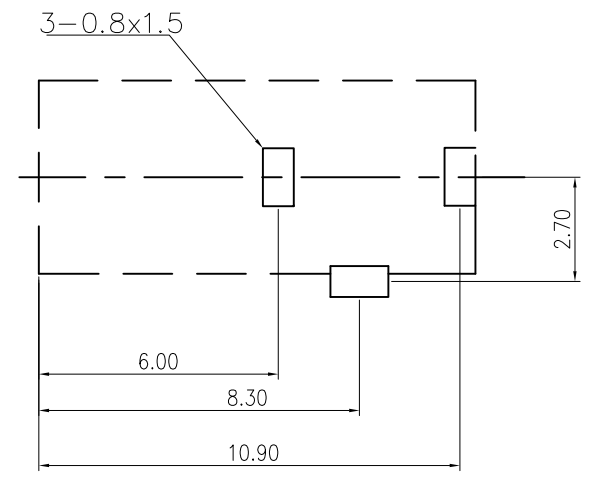
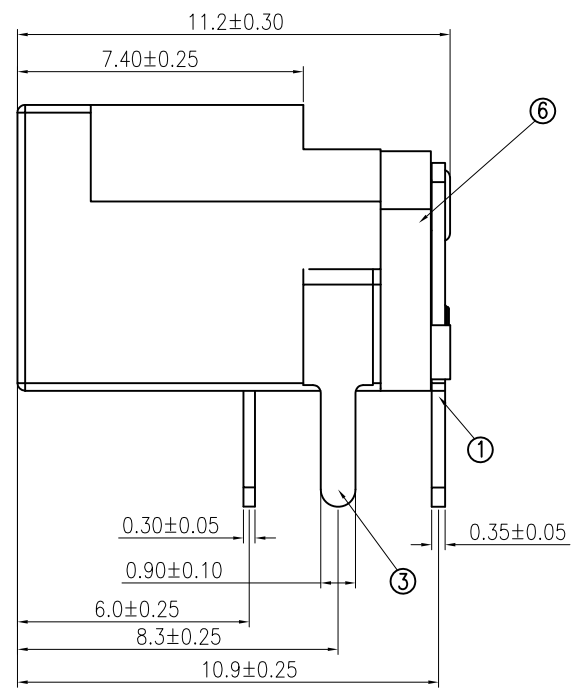
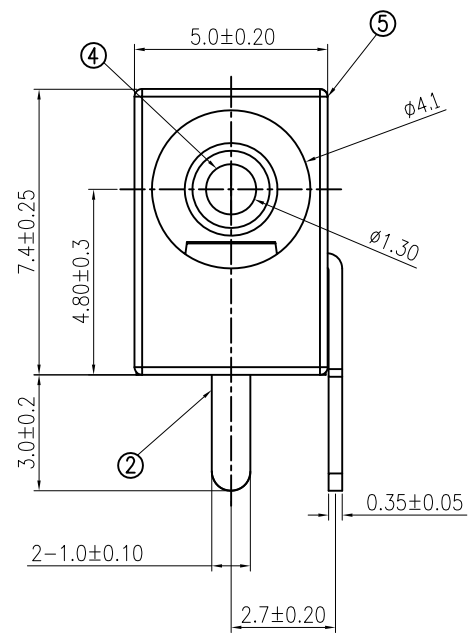


REV.	NOTES	DATE
A	RELEASED	2017/06/07



RECOMMENDED PCB LAYOUT  
TOP VIEW (TOLERANCE:±0.05)

YYMMDD  
 DD : DAY 日  
 MM : MONTH 月  
 YY : YEAR 年

NOTE:  
1. Material

- 1.1 TERMINAL 1#:H65 t=0.35
- 1.2 TERMINAL 2#:C5191 t=0.30
- 1.3 TERMINAL 3#:H65 T=0.35
- 1.4 ENTER PIN:H65 φ1.3
- 1.5 Housing:PA66+30%G/F.,UL94V-0 Black
- 1.6 Cover:PA66+30%G/F.,UL94V-0 Black

2. Plating

- 2.1 Terminal 1#&2#&3#:1u"MIN.Ag In Contact
- 2.2 ENTER PIN:1u"MIN.SN In Contact Area  
Over 30u" MIN. Ni.

3. ELECTRICAL CHARACTERISTICS:

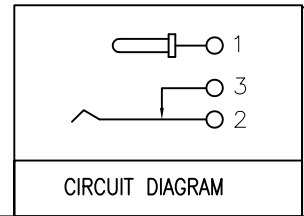
- 3-1. RATING: 30V 2A
- 3-2. CONTACT RESISTANCE: 50mΩ MAX.
- 3-3. DIELECTRIC WITHSTANDING VOLTAGE: 500V AC FOR ONE MINUTE
- 3-4. INSULATION RESISTANCE: 100MΩ MIN. MEASURED BY 500V DC

4. MECHANICAL CHARACTERISTICS:

- 4-1. INSERTION FORCE : 0.3~3.0 KGF
- 4-2. WITHDRAWAL FORCE : 0.3~3.0 KGF

5. LIFE TEST: 5,000 CYCLES MIN.

6. FOR REFLOW SOLDERING LEAD-FREE PROCESS.



DIMENSIONS  
TOLERANCE  
METRIC

X : ±0.3  
X.X : ±0.20  
X.XX : ±0.10  
X.XXX : ±0.05

ANGLES

X : ±1°  
X.X : ±0.5°

⑥	COVER	PA66 +30%G/F	UL94V-0 Black
⑤	HOUSING	PA66 +30%G/F	UL94V-0 Black
④	ENTER PIN	黃銅H65 φ1.3	鍍錫
③	TERMINAL 3#	黃銅H65 T=0.35	鍍銀
②	TERMINAL 2#	磷青銅 T=0.30	鍍銀
①	TERMINAL 1#	黃銅H65 T=0.35	鍍銀

NO.	PART NAME	MATERIAL	DESCRIPTION
單位(UNIT'S)			
數量(QTY)		N/A	
材料(MTL)		SEE NOTE	
處理(FINISH)		SEE NOTE	
繪圖(DRAW)		東莞翊豐精密五金有限公司	
設計(DE'N)		圖名(NAME) DC POWER JACK中心PIN 1.3 外圓4.1噴 D/C	
審核(CH'K)		料號(PART NUMBER) AAPJ+0002-13Z1S	
核准(APP'D)		圖號(DRAW NUMBER) R000213Z1S	
比例(SCALE) 1/1		圖紙(SIZE) A4	
頁次(SHEET) 1/2		版次(REV.) A	