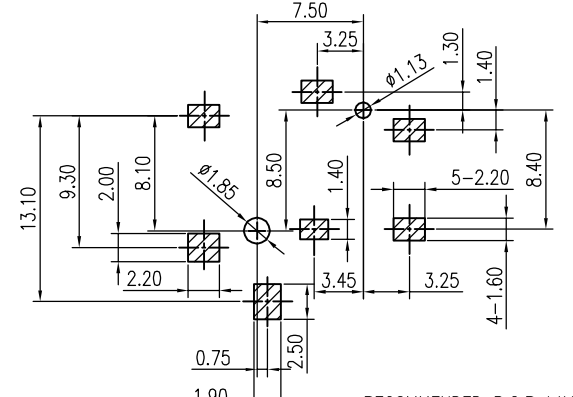
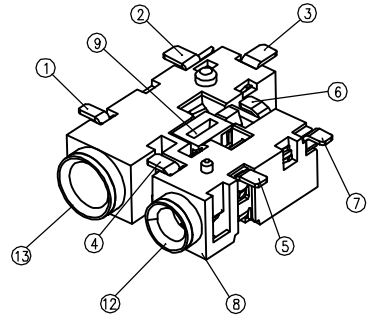
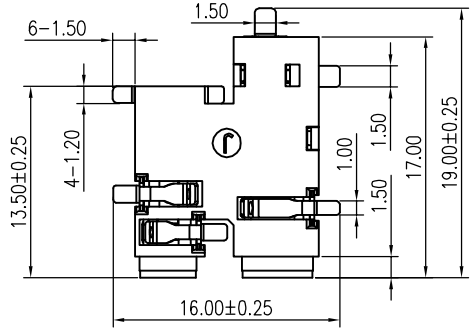
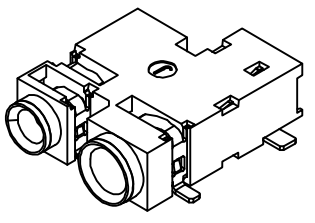


REV.	NOTES	DATE
A	RELEASED	2017/06/19



- NOTES:
- MATERIAL: SEE "TABLE 1";
 - FINISH: SEE "TABLE 1";
 - ELECTRICAL:
 - VOLTAGE RATING: 12 VAC RMS;
 - CURRENT RATING: 1 AMP;
 - CONTACT RESISTANCE: 50mΩ Max.(Initial), 100mΩ Max.(After Life test);
 - INSULATION RESISTANCE: 100 MΩ Min., 500VDC.
 - WITHSTAND VOLTAGE: 500 VAC RMS 50(60)Hz, 1 minute;
 - MECHANICAL:
 - MATING FORCE: 7.62Kgf MAX.;
 - UNMATING FORCE: 4.20Kgf to 7.62Kgf (Initial) ; 3.40Kgf to 7.62Kgf (After Life test) ;
 - OPERATING LIFE: 5000 CYCLES MIN.;
 - ENVIRONMENTAL:
 - OPERATION: -30°C~+60°C, STORAGE:-40°C~+85°C,

RECOMMENDED P.C.B LAYOUT
TOP VIEW (TOLRANCE:±0.05)

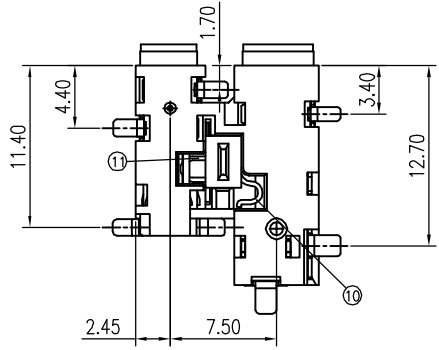
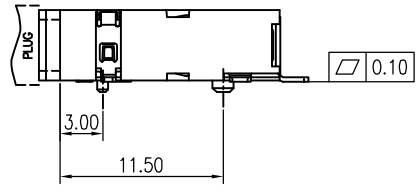
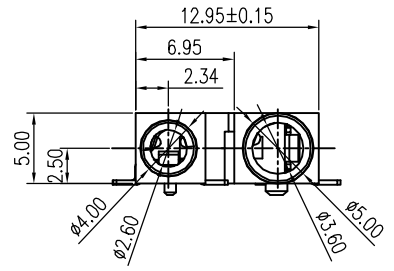
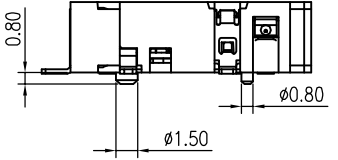
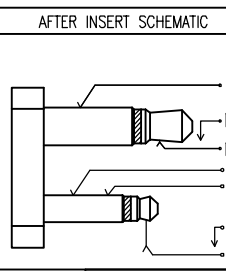
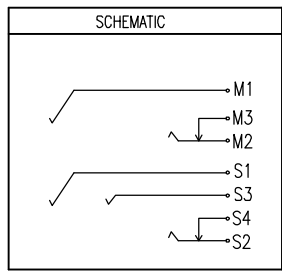


TABLE 1:

NO.	PART NAME	QTY	MATERIAL	DESCRIPTION	REMARK
13	SLEEVE-B	1	Brass	NI PLATED	
12	SLEEVE-A	1	Brass	NI PLATED	
11	TERMINAL-B	1	STAINLESS STEEL		T=0.30mm
10	TERMINAL-A	1	STAINLESS STEEL		T=0.30mm
9	Cover	1	LCP	Block UL 94V-0	
8	Housing	1	LCP	Block UL 94V-0	
7	CONTACT-S4	1	Phosphor bronze	Au 1u"min	T=0.30mm
6	CONTACT-S3	1	TiCu	Au 1u"min	T=0.30mm
5	CONTACT-S2	1	TiCu	Au 1u"min	T=0.30mm
4	CONTACT-S1	1	TiCu	Au 1u"min	T=0.30mm
3	CONTACT-M3	1	Phosphor bronze	Au 1u"min	T=0.30mm
2	CONTACT-M2	1	TiCu	Au 1u"min	T=0.30mm
1	CONTACT-M1	1	TiCu	Au 1u"min	T=0.30mm



ø3.50mm PLUG SPEC	ø2.50mm PLUG SPEC

DIMENSIONS TOLERANCE METRIC

X ±0.5
X.X ±0.30
X.XX ±0.20

ANGLES
X ±1°
X.X ±0.5°

單位(UNITS)	mm
數量(QT'Y)	N/A
材料(MT'L)	SEE NOTE
處理(FINISH)	SEE NOTE
繪圖(DRAW)	
設計(DE'N)	
審校(CH'K)	
核准(APP'D)	

東莞翊豐精密五金有限公司

圖名(NAME)
双联耳机座-1(左2.5 右3.5)

料號(PART NUMBER)	AAPJ+JK07P-J71ZL
圖號(DRAW NUMBER)	
圖檔(FILE NAME .DWG)	
比例(SCALE)	1/1
圖紙(SIZE)	A4
頁次(SHEET)	1
版次(REV.)	A