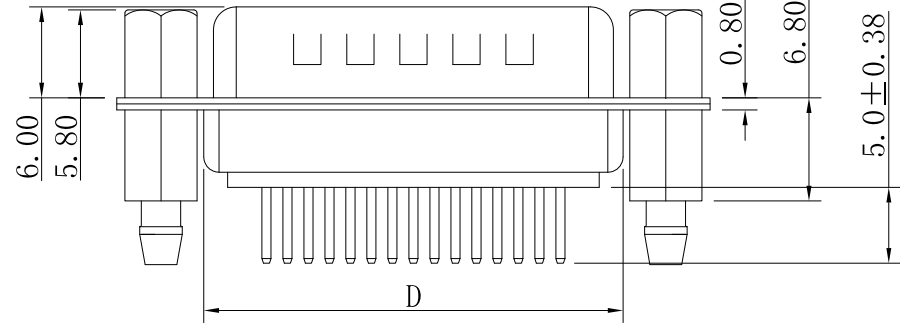
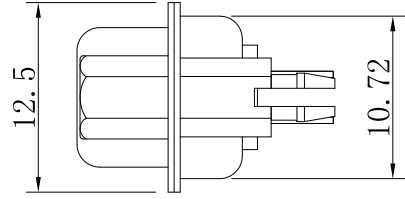
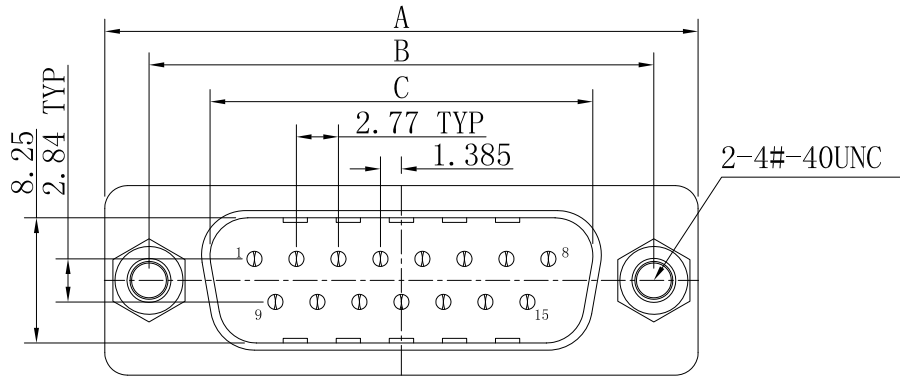
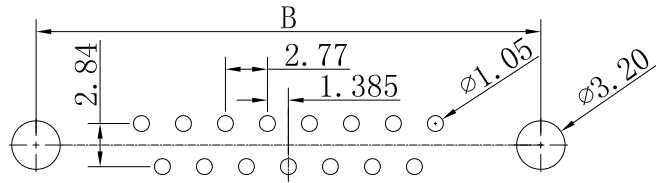


REV.	NOTES	DATE
01	RELEASED	2021/02/20



Remark:
 1. Performance:
 Rated voltage: 250V
 Rated current: 3AMP
 Contact impedance: 30mΩ MAX.
 Insulation impedance: 1000MΩ min.at 500V DC
 Resistant voltage: 500V Per minute
 Temperature range: -55° C ~ 105° C



PCB layout

PIN	A±0.38	B±0.25	C±0.25	D±0.25
09	30.81	24.99	16.92	19.20
15	39.14	33.32	25.25	27.65
25	53.04	47.04	38.96	41.20

DIMENSIONS TOLERANCE METRIC	
X	:±0.5
X.X	:±0.38
X.XX	:±0.25
ANGLES	
X	:±1°
X.X	:±0.5°

單位(UNITS)	mm	東莞翊豐精密五金有限公司							
數量(QTY)	N/A								
材料(MTL)	SEE NOTE	圖名(NAME)							
處理(FINISH)	SEE NOTE	D-SUB 公直立式黑半金錫插板鎖5.8*10.5鋼 ROHS							
繪圖(DRAW)		料號(PART NUMBER)		AA02+XX01-2010Y					
設計(DE'N)		圖號(DRAW NUMBER)							
審校(CH'K)		圖檔(FILE NAME .DWG)							
核准(APP'D)		比例(SCALE)	1/1	圖紙(SIZE)	A4	頁次(SHEET)	1	版次(REV.)	01