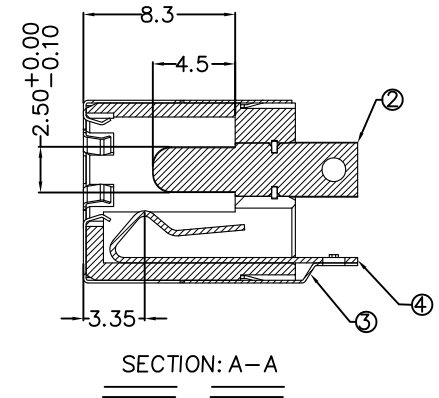
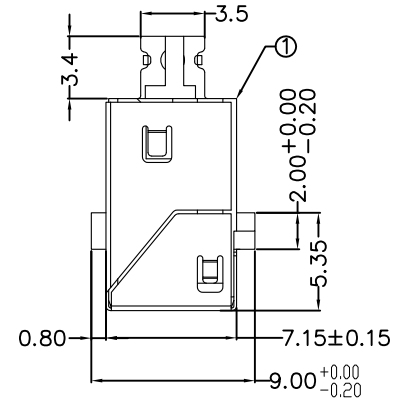
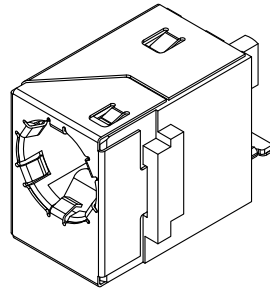
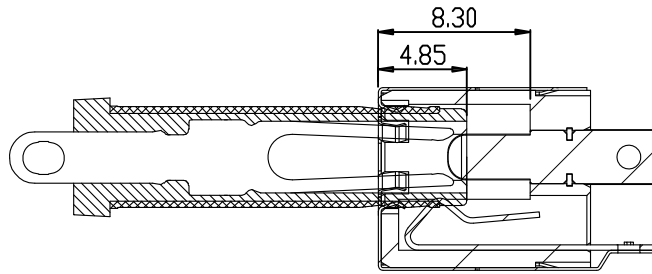
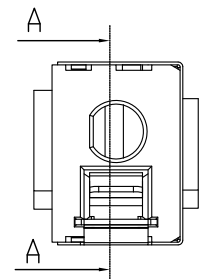
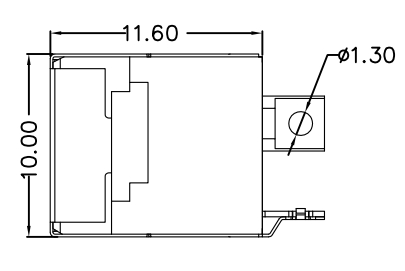
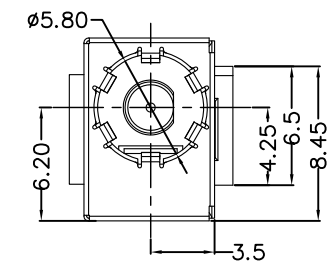
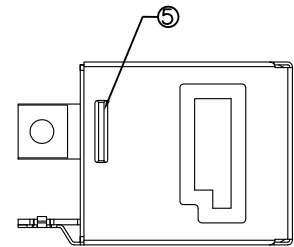
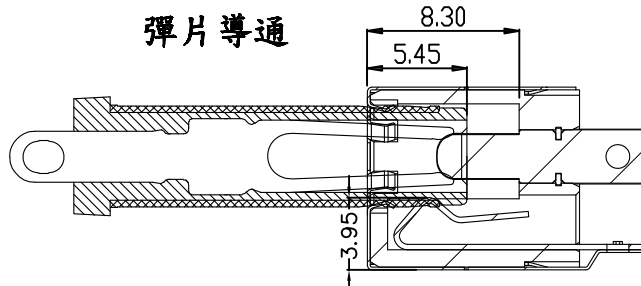


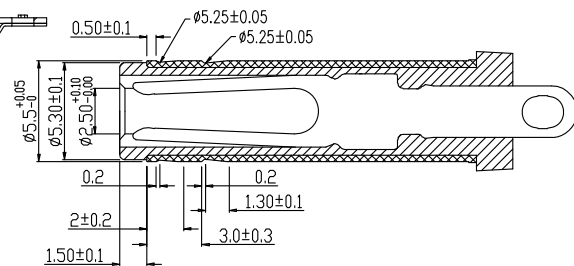
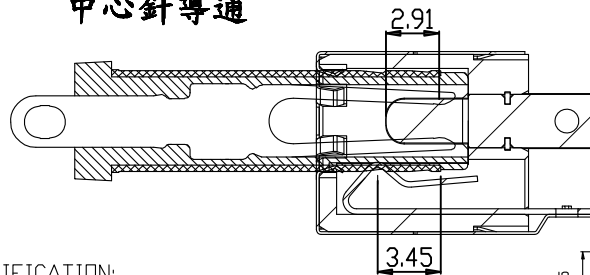
# 彈片, PIN導通剖視圖



## 彈片導通

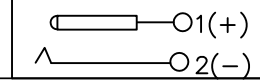


## 中心針導通



### PLUG TYPE

### SCHEMATIC



DIMENSIONS TOLERANCE  
 METRIC  
 .0= ±.38  
 .00= ±.25  
 .000= ±.15  
 ANG.= ±1°

### SPECIFICATION:

- ELECTRICAL CHARACTERISTICS:
  - RATED VOLTAGE: 20V 7A
  - INSULATION RESISTANCE: 100 MOHMS MIN AT 500V DC AFTER 1 MINUTE.
  - DIELECTRIC WITHSTANDING VOLTAGE: 500V AC FOR 1MINUTE.
  - CONTACT RESISTANCE: 30 MOHMS MAX.
- MECHANICAL CHARACTERISTICS:
  - INSERTION FORCE: 3.0KGF MAX; EXTRACTION FORCE: 0.35KGF MIN.
  - DURABILITY (INSERTION/EXTRACTION CYCLES): 5000 CYCLES.
- OPERATING TEMPERATURE RANGE: -40°~85°.

5	固定片	1	SUS T=0.30mm	N/A
4	外殼	1	SUS T=0.15mm	30u" Min. Ni PLATED
3	彈片端子	1	C5191 T=0.30mm	80u" Min. Ni PLATED
2	中心針	1	BRASS	30u" Min. Ni PLATED
1	塑膠	1	PBT	UL94V-0(BLACK)
LTR	PART NAME	QTY	MATERIAL	REMARK

單位(UNITS)	mm
數量(QTY)	N/A
材料(MTL)	SEE NOTE
處理(FINISH)	SEE NOTE

<b>東莞翊豐精密五金有限公司</b>					
圖名(NAME) DC POWER JACK Ø2.5 2PIN 180度焊線式鍍鍍					
料號(PART NUMBER)			APJ+6D11+06		
圖號(DRAW NUMBER)					
圖檔(FILE NAME .DWG)					
比例(SCALE)	1/1	圖紙(SIZE)	A4	頁次(SHEET)	1
				版次(REV.)	A