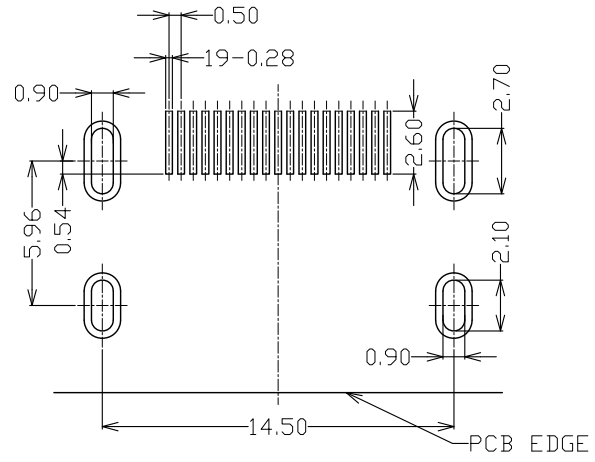
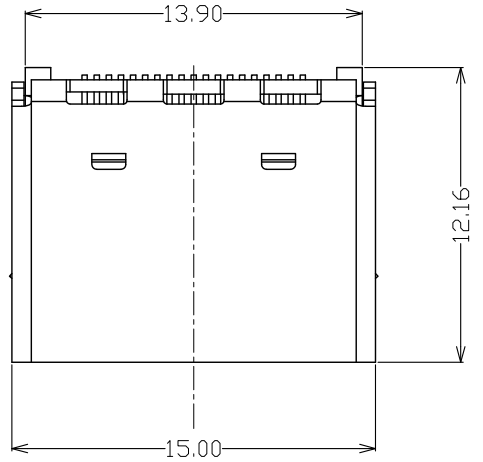
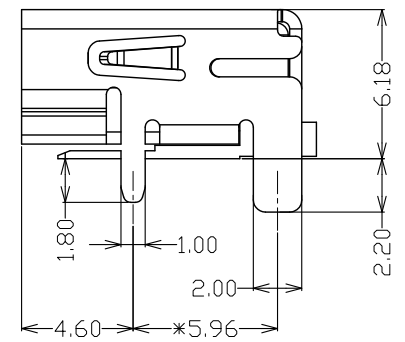
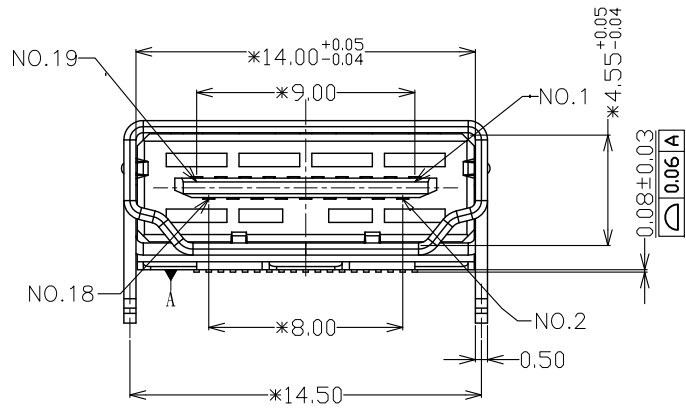


REV.	NOTES	DATE
A	RELEASED	2017/10/12



P.C.B LAYOUT (TOLERANCE ±0.05)  
TOP VIEW (THICKNESS = 1.60 ± 0.05 mm)



NOTE:

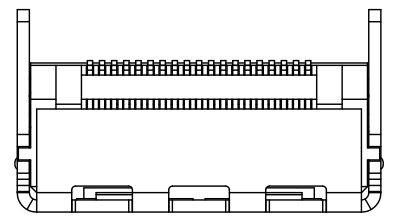
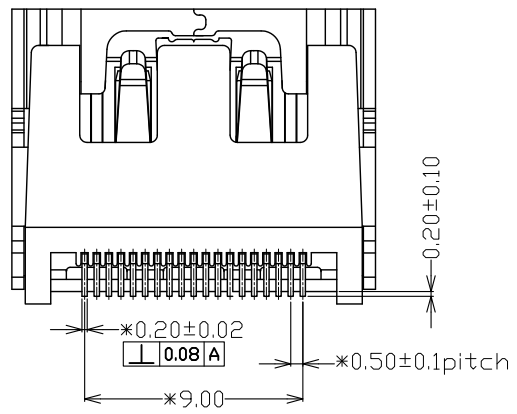
1. MATERIAL:

- 1.1 Insulator: LCP+30%Glass Fiber (UL94V-0) BLACK
- 1.2 Shell And Contact: Brass
- 1.3 Contact Plating: 15u" MIN. GOLD PLATING ON CONTACT POINT, 100u" MIN. TIN PLATING ON SOLDER TAILS, 50u" MIN. NICKEL UNDERPLATING OVERALL.
- 1.4 Shell: 80u" Nickel plated over all

2. SPECIFICATION:

- 2.1 Current Rate: 0.5 Amp
- 2.2 insulator Resistance: 100MΩ Min
- 2.3 Dielectric Strength: 500V AC Per minute
- 2.4 Contact Resistance: 30mΩ Max
- 2.5 Operation Temperature: -55°C ~ +105°C

PART NO:	鹵素	端子電鍍	包裝方式
AUS+A04P+0W700	無鹵	半金15u"	卷帶包裝



DIMENSIONS TOLERANCE	
METRIC	
.0 = ±0.30	
.00 = ±0.25	
.000 = ±0.15	
ANG. = ±2°	

單位(UNITS)	mm
數量(QTY)	N/A
材料(MT'L)	SEE NOTE
處理(FINISH)	SEE NOTE

<b>東莞翊豐精密五金有限公司</b>			
圖名(NAME)			
HDMI 19PIN母SMT 12.16mm 半金15u" 無耳無彈			
料號(PART NUMBER)	AUS+A04P+0W700		
圖號(DRAW NUMBER)	RAUSA04P0W700		
圖檔(FILE NAME .DWG)	j:\8000_L\最終第一HDMI 19PIN母SMT(有耳)		
比例(SCALE)	1/1	圖紙(SIZE)	A4
頁次(SHEET)	1	版次(REV.)	A