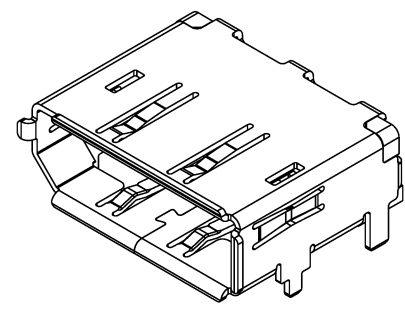
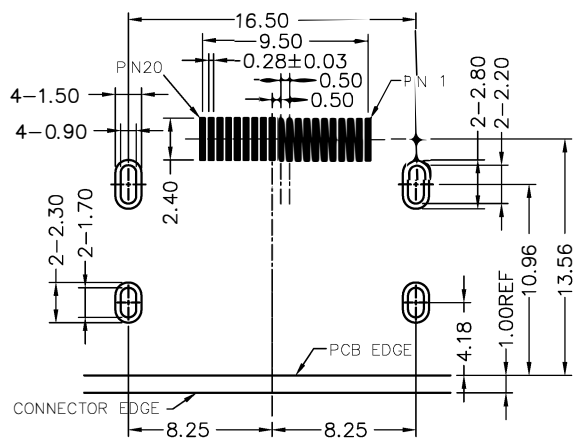
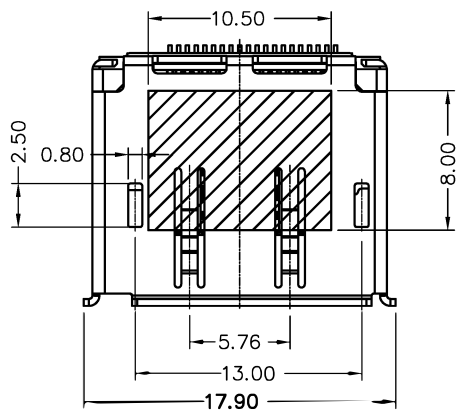
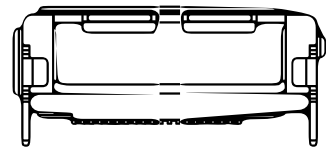
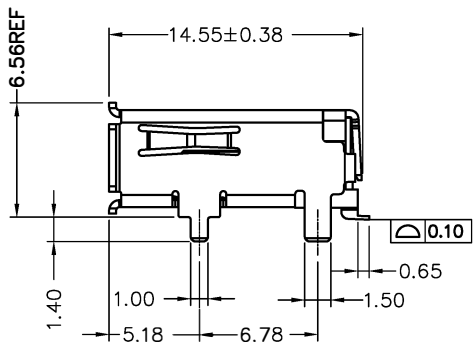
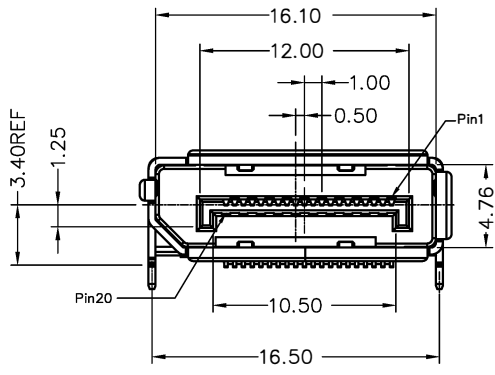


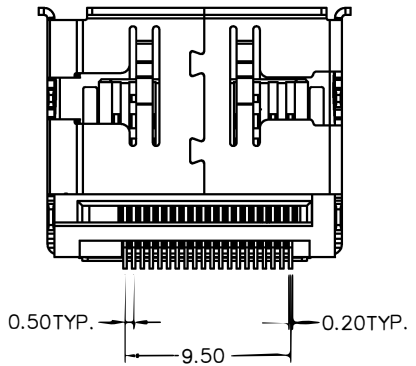
| REV. | NOTES    | DATE       |
|------|----------|------------|
| 01   | RELEASED | 2019/02/17 |



RECOMMENDED P.C.B LAYOUT(PCB THICKNESS: 1.6mm)  
COMPONENT SIDE VIEW(TOLERANCE: ±0.05)



- NOTE:
- MATERIAL:
    - HOUSING: LCP, UL 94V-0,COLOR: BLACK;
    - CONTACT: C2680, T=0.20mm.
    - SHIELD: SUS, T=0.40mm.
    - MYLAR: POLYIMIDE
  - FINISH:
    - CONTACT: GOLD(SEE P/N) PLATING IN CONTACT AREA, MATTE TIN(80u" ) PLATED IN SOLDER AREA, 50u" MIN. NICKEL UNDERPLATED OVERALL.
    - SHIELD: 50u" MIN. NICKEL UNDERPLATED OVERALL.
  - MECHANICAL CHARACTERISTICS
    - RATING CURRENT: 0.5A
    - RATING VOLTAGE: 40V
    - CONTACT RESISTANCE: 40 mΩ MAX
    - INSULATION RESISTANCE:
      - UNMATED: 100MΩ MIN AT 500 VDC
      - MATED: 10M OHMS MIN AT 150 VDC
    - DIELECTRIC WITHSTANDING VOLTAGE: 500V AC/1MINUTE
    - INSERTION FORCE: 4.5Kgf Max; WITHDRAWAL FORCE:1-5 CYCLES 2.0~4.0Kgf;
    - OPERATING TEMPERATURE: -20°C--+85°C
    - STORAGE TEMPERATURE: -20°C--+65°C
  - NOTES:
    - ALL COMPONENTS ARE RoHS2.0+HF COMPLIANT.
    - RESISTANCE TO SOLDERING HEAT: 265°C FOR 10 SECONDS.



| DIMENSIONS TOLERANCE METRIC |        |
|-----------------------------|--------|
| X                           | :±0.5  |
| X.X                         | :±0.38 |
| X.XX                        | :±0.25 |
| ANGLES                      |        |
| X                           | :±1°   |
| X.X                         | :±0.5° |

|            |          |                       |                  |          |    |           |   |
|------------|----------|-----------------------|------------------|----------|----|-----------|---|
| 單位(UNITS)  | mm       | 東莞翊豐精密五金有限公司          |                  |          |    |           |   |
| 數量(QTY)    | N/A      |                       |                  |          |    |           |   |
| 材料(MTL)    | SEE NOTE |                       |                  |          |    |           |   |
| 處理(FINISH) | SEE NOTE |                       |                  |          |    |           |   |
| 繪圖(DRAW)   |          | 圖名(NAME)              |                  |          |    |           |   |
| 設計(DE'N)   |          | DP 90度SMT有卷边无定位柱 ROHS |                  |          |    |           |   |
| 審校(CH'K)   |          | 料號(PART NUMBER)       | AADP+DP01S-LBA11 |          |    |           |   |
|            |          | 圖號(DRAW NUMBER)       |                  |          |    |           |   |
| 核准(APP'D)  |          | 圖檔(FILE NAME .DWG)    |                  |          |    |           |   |
|            |          | 比例(SCALE)             | 1/1              | 圖紙(SIZE) | A4 | 頁次(SHEET) | 1 |