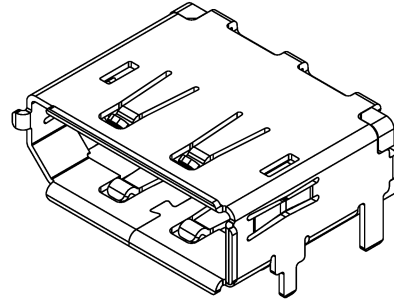
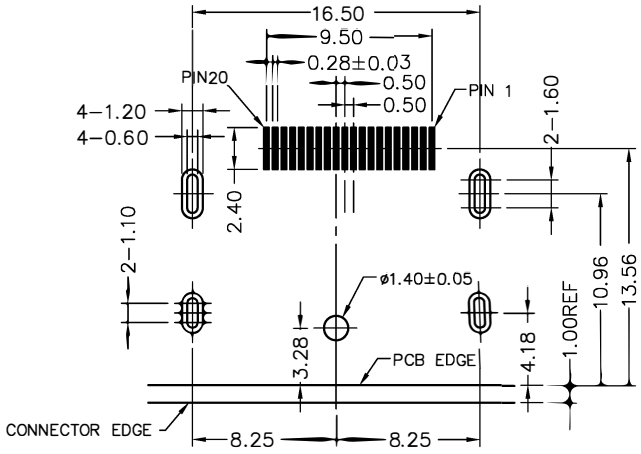
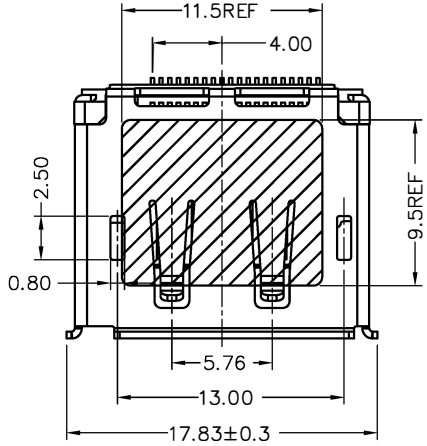
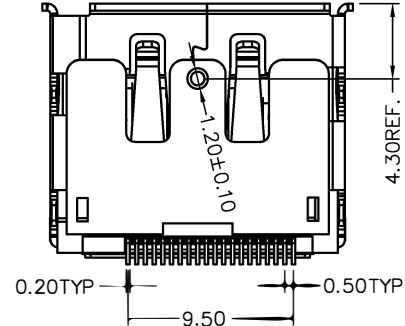
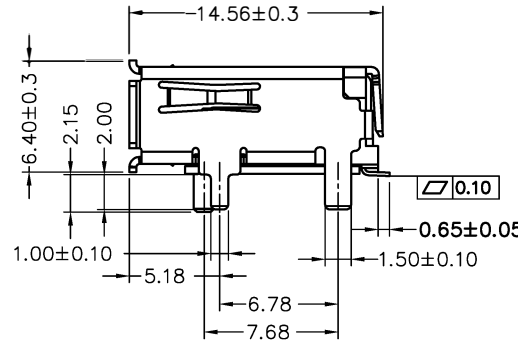
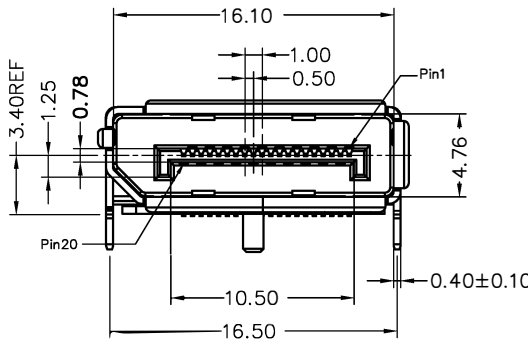


REV	NOTES	DATE
01	RELEASED	2019/09/24



RECOMMENDED P.C.B LAYOUT(PCB THICKNESS: 1.6mm)
COMPONENT SIDE VIEW(TOLERANCE: ±0.05)

- NOTE:
- MATERIAL:
 - HOUSING: LCP, UL 94V-0
COLOR: BLACK.
 - CONTACT: C2680, T=0.20mm.
 - SHIELD: C2680, T=0.40mm.
 - COVER: LCP, UL 94V-0
 - FINISH:
 - CONTACT: GOLD(0.6U") PLATING IN CONTACT AREA, 80U" MIN Tin PLATED IN SOLDER AREA, 50U" MIN. NICKEL UNDERPLATED OVERALL.
 - SHIELD: 50U" MIN. NICKEL UNDERPLATED OVERALL.
 - MECHANICAL CHARACTERISTICS
 - RATING CURRENT: 0.5A
 - RATING VOLTAGE: 40V
 - CONTACT RESISTANCE: 40 mΩ MAX
 - INSULATION RESISTANCE:
 - UNMATED: 100MΩ MIN AT 500 VDC
 - MATED: 10M OHMS MIN AT 150 VDC
 - DIELECTRIC WITHSTANDING VOLTAGE: 500V AC/1MINUTE
 - DURABILITY: 10000 CYCLES.
 - OPERATING TEMPERATURE: -20°C--+85°C
 - STORAGE TEMPERATURE: -20°C--+65°C
 - NOTES:
 - ALL COMPONENTS ARE RoHS COMPLIANT.
 - RESISTANCE TO SOLDERING HEAT: 265°C FOR 10 SECONDS.



DIMENSIONS TOLERANCE METRIC	
X	:±0.5
X.X	:±0.38
X.XX	:±0.25
ANGLES	
X	:±1°
X.X	:±0.5°

單位(UNITS)	mm	東莞翊豐精密五金有限公司					
數量(QTY)	N/A						
材料(MTL)	SEE NOTE						
處理(FINISH)	SEE NOTE						
繪圖(DRAW)		圖名(NAME) DP 90度SMT有卷邊帶定位柱 ROHS					
設計(DE'N)		料號(PART NUMBER)	AADP+DP01B-LBA12				
		圖號(DRAW NUMBER)					
審校(CH'K)		圖檔(FILE NAME .DWG)					
		比例(SCALE)	1/1	圖紙(SIZE)	A4	頁次(SHEET)	1
核准(APP'D)							